

# RED ROCK ROAD RANCH

Siskiyou County, CA

925 acres



10-21-23

**Bill Wright**  
**SHASTA LAND SERVICES, INC.**  
358 Hartnell Avenue, Suite C  
Redding, CA 96002  
**(530) 941-8100**  
DRE# 00963490

[www.ranch-lands.com](http://www.ranch-lands.com)



# 925 ac Red Rock Road Ranch

The 925-acre Red Rock Road Ranch is located in beautiful Siskiyou County, California about 3 hours north of Sacramento. The property fronts on Red Rock Road, which is about a 20 minute drive southeast of Macdoel, CA. Klamath Falls, OR is the closest larger city and is located about an hour drive to the north up Highway 97.

This rectangular-shaped ranch is approximately 925 acres and is located on the northerly side of Red Rock Road. The northerly, westerly, and easterly boundaries of the ranch adjoin BLM lands for additional hunting, horseback riding, and hiking opportunities!

Mt. Shasta and the surrounding mountains can be seen from the northerly portions of the property, up on the tree-lined area, and as a result, there are several perfect spots for a new home or cabin overlooking the ranch.

## RANCH & FARMING INFORMATION:

- **CROPS:** According to the landowner and the tenant, the entire ranch is certified organic. Currently, two (2) pivots irrigate about 152 acres. The pivot fields have a long experience of cultivation to organic alfalfa hay as well as grain hay, grass, and grain crops for hay and pasture. In 2022 the pivot fields were planted back to Organic Alfalfa Hay and the fields are in nice shape.

There is an additional approximately 52 acres capable of being developed for farming, with more than adequate water available. The balance of the ranch is juniper and sage brush rangeland terrific for hunting, recreation and spring livestock grazing. As you rise up the hill above the pivots there are great views of Mt. Shasta and the Red Rock Valley.

The ranch has an irrigation well located near the southeast corner with a 60 hp electric motor which was completely reworked in 2020-2021. Pacific Power utilities. Underground mainline to the two pivots.

- **ACREAGE:** Approximately 925.40 acres according to the Siskiyou County APN numbers.
- **ZONING:** The assessor parcel numbers are 002-170-070, 002- 170-130, and 010-010-620. The ranch is enrolled in the Williamson Act Program, which results in lower real estate taxes, as real estate taxes are computed based upon a properties agricultural income, rather than assessed at current market value plus additional yearly increases. In 2022 the RE Taxes were a total of \$2,328.
- The ranch is in northerly Siskiyou County and south of the Oregon/California border. Klamath County lies to the north in Oregon. It has a population of about 66,000 and the city of Klamath Falls has a population of 21,000. The area has 7 elementary schools, 1 junior high school and 2 high schools. Klamath Community College and the Oregon Institute of Technology offer advanced education opportunities. There are also complete medical facilities available in Klamath Falls. Additionally, Macdoel, CA has an elementary school and the small community of Dorris, CA has a high school.

**RECREATION:**

Mule deer, goose, and dove & quail hunting all on this ranch. The California deer hunting zone is X-1, with the ranch eligible for a "landowner" tag. A new owner might consider exploring the [Private Lands Management](#) (PLM) program to enhance the habitat and hunting opportunities on the ranch. Late season deer hunting, especially with alfalfa fields nearby, can be terrific!

The area offers wonderful recreational opportunities for all ages during any season. The Klamath County National Forest occupies over 1,700,000 acres. Siskiyou County is also a premier destination for fishermen. The McCloud River is famous for its spirited and gorgeous Redband trout, and the Upper Sacramento River is a favorite for its miles of easy access. Both are within easy access of the ranch for day trips.

There are more than 82 lakes and streams alone in neighboring Klamath County. 150,000 acres of wildlife refuges are devoted primarily to waterfowl, including the largest concentration of wintering bald eagles in the continental United States. The area has five golf courses, downhill and cross-country skiing, along with a variety of health and fitness clubs. The beautiful [Running Y Resort](#) is only about an hour north of the ranch. This is a wonderful community, complete with an Arnold Palmer-designed championship 18-hole golf course!

**Asking Price: ~~\$1,050,000~~ REDUCED ASKING PRICE - \$995,000**

**DIRECTIONS:** from Highway 97 at Macdoel, CA - turn south on Old State Hwy – 1 mile to left on Red Rock Road then 11 miles. The ranch begins on the left (north) side of the road at the fence line. On the right or south side of the road you will see a large metal Hay Barn marked "Barn # 9".

**For more information and an appointment to see this property, contact:**

**Bill Wright**  
**SHASTA LAND SERVICES, INC.**  
**358 Hartnell Avenue, Suite C**  
**Redding, CA 96002**  
**(530) 941-8100**  
**DRE# 00963490**

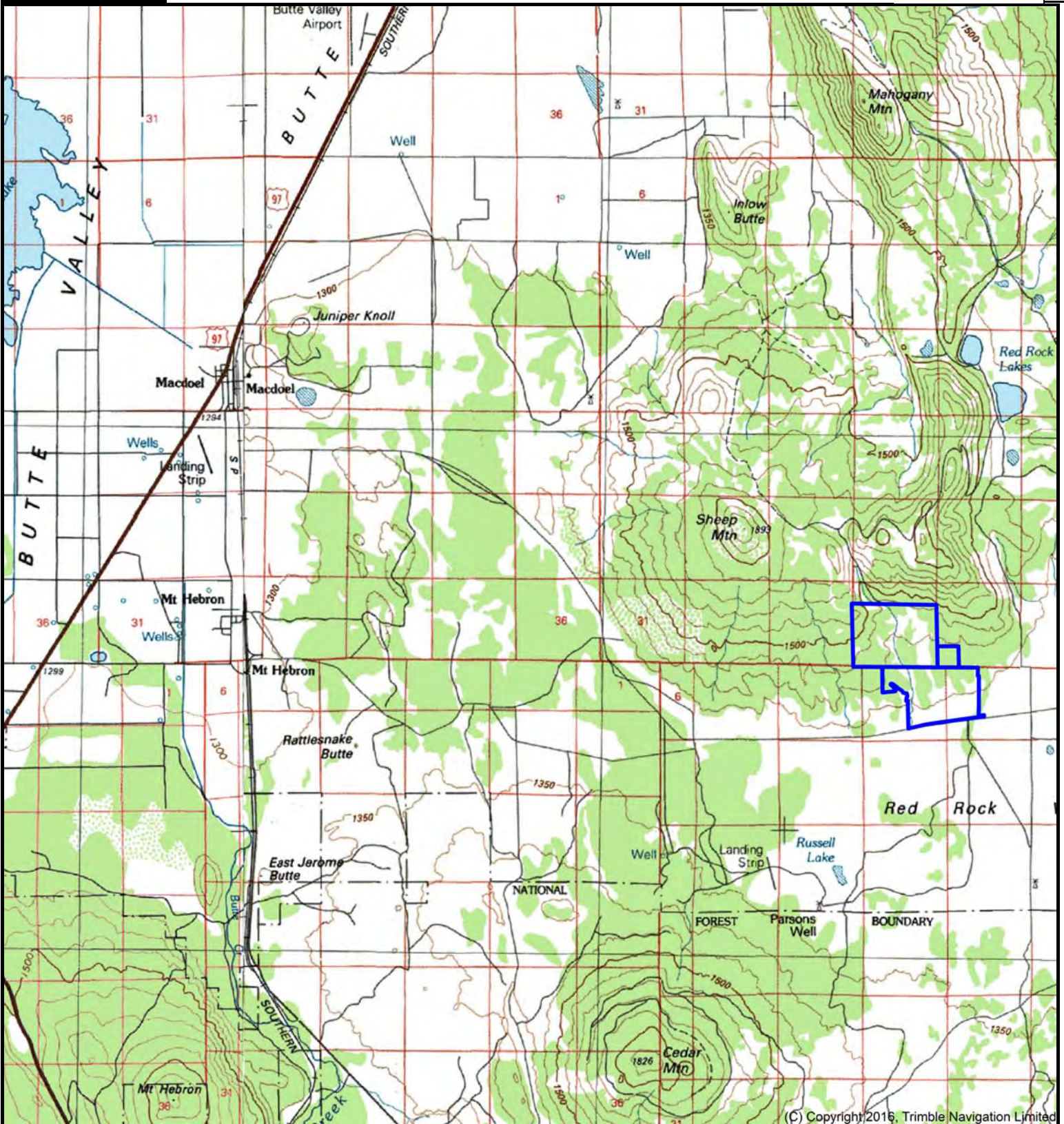
**[www.ranch-lands.com](http://www.ranch-lands.com)**

The above information was obtained from sources deemed reliable, but Shasta Land Services, Inc. and the Seller do not assume responsibility for its accuracy or completeness. A prospective buyer should verify all data to their own satisfaction and seek the advice of legal counsel on issues such as water rights, grazing leases & permits, tax consequences, zoning, etc. Buyer is to rely solely on their own independent and due diligence as to the feasibility of the ranch for their own purpose. Maps, acreage and square footage estimates, and field sizes that may be included in this brochure are for general information only and are not of "survey" or expert quality. This Property is subject to prior sale, price change, correction, or withdrawal from the market without notice.

# Red Rock Road Ranch Approx 925 acres Siskiyou County, CA

Bill Wright  
Shasta Land Services, Inc.  
530-941-8100  
billwright@ranch-lands.com  
www.ranch-lands.com

TNP 13074



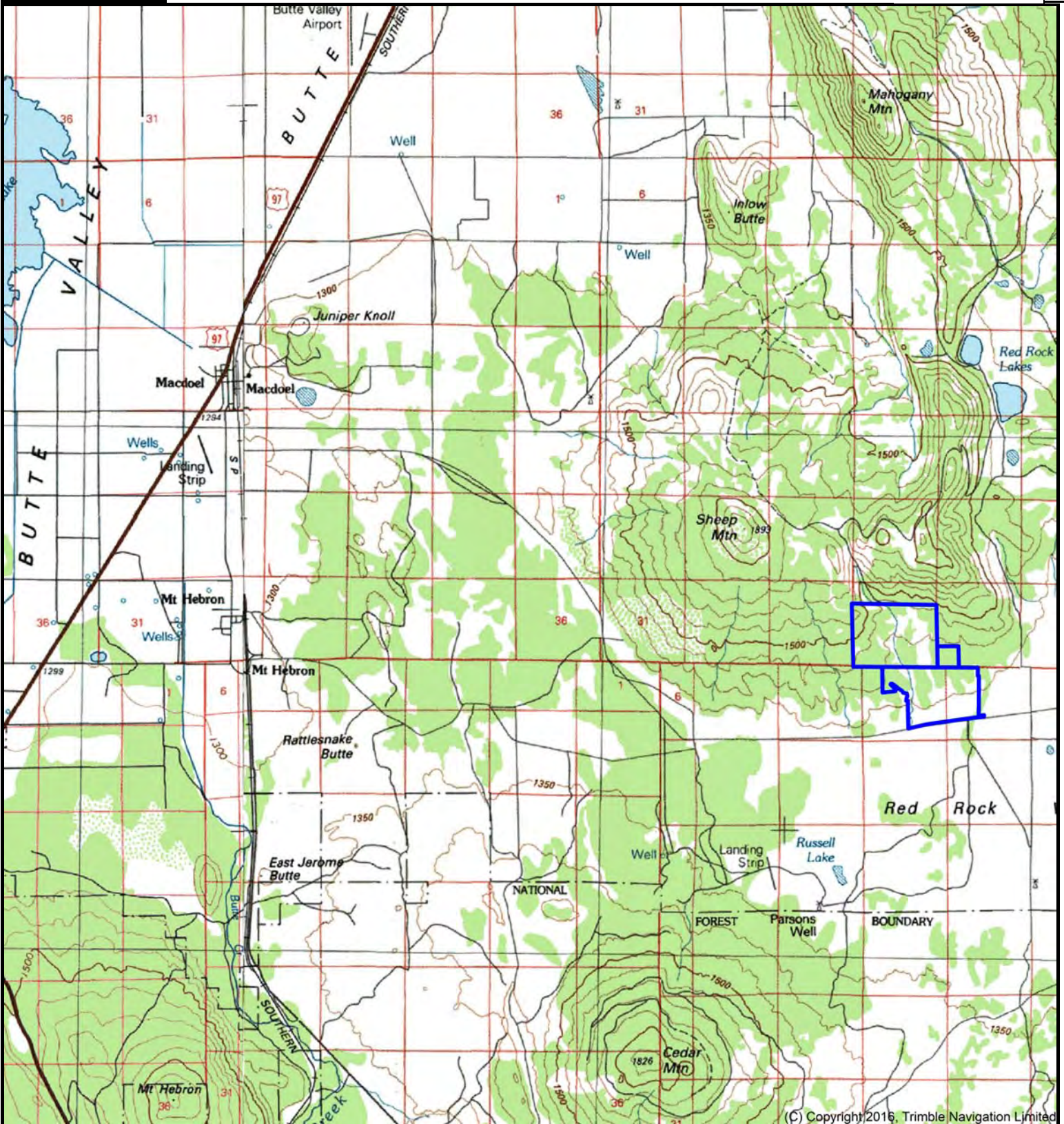
(C) Copyright 2016, Trimble Navigation Limited

DISCLAIMER: The information contained herein is as obtained by this broker from sellers, owners, or other sources. This information is considered reliable, neither this broker nor owners make any guarantee, warranty or representation as to correctness of any data or descriptions and the accuracy of such statements. The correctness and / or accuracy of any and all statements should be determined through independent investigation made by the prospective purchaser. Any offer for sale is subject to prior sale, errors and omissions, change of price, terms or other conditions or withdrawal from sale in whole or in part, by seller without notice and at the sole discretion of seller. Readers are urged to form their own independent conclusions and evaluations in consultation with legal counsel, accountants, and/or investment advisors concerning and all material contained herein.

# Red Rock Road Ranch Approx 925 acres Siskiyou County, CA

Bill Wright  
Shasta Land Services, Inc.  
530-941-8100  
billwright@ranch-lands.com  
www.ranch-lands.com

TNP 13074

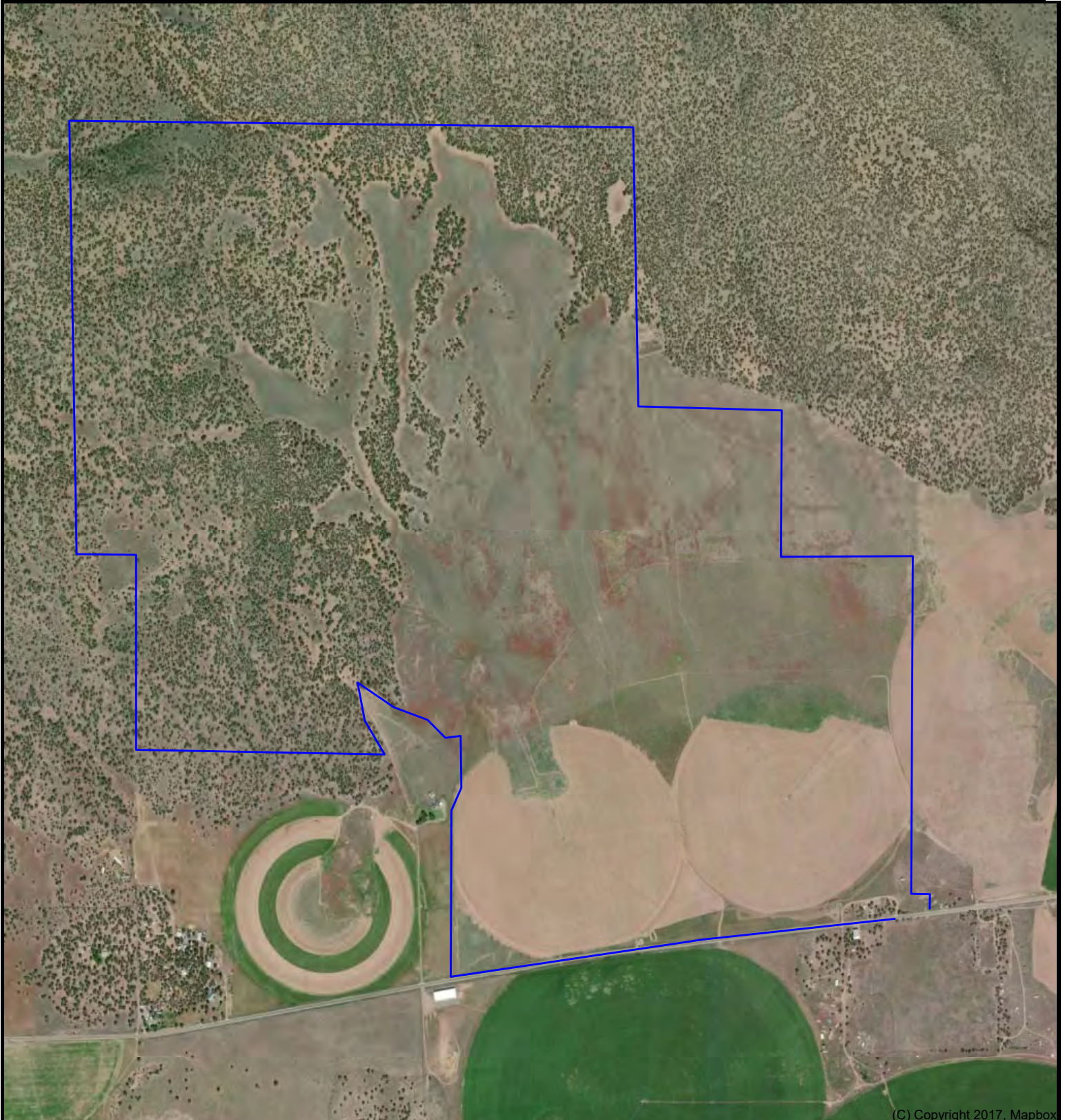


DISCLAIMER: The information contained herein is as obtained by this broker from sellers, owners, or other sources. This information is considered reliable, neither this broker nor owners make any guarantee, warranty or representation as to correctness of any data or descriptions and the accuracy of such statements. The correctness and / or accuracy of any and all statements should be determined through independent investigation made by the prospective purchaser. Any offer for sale is subject to prior sale, errors and omissions, change of price, terms or other conditions or withdrawal from sale in whole or in part, by seller without notice and at the sole discretion of seller. Readers are urged to form their own independent conclusions and evaluations in consultation with legal counsel, accountants, and/or investment advisors concerning and all material contained herein.



# Red Rock Road Ranch Siskiyou County, CA approx. 925 acres+-

Bill Wright  
Shasta Land Services, Inc..  
530-941-8100  
billwright@ranch-lands.com  
www.ranch-lands.com



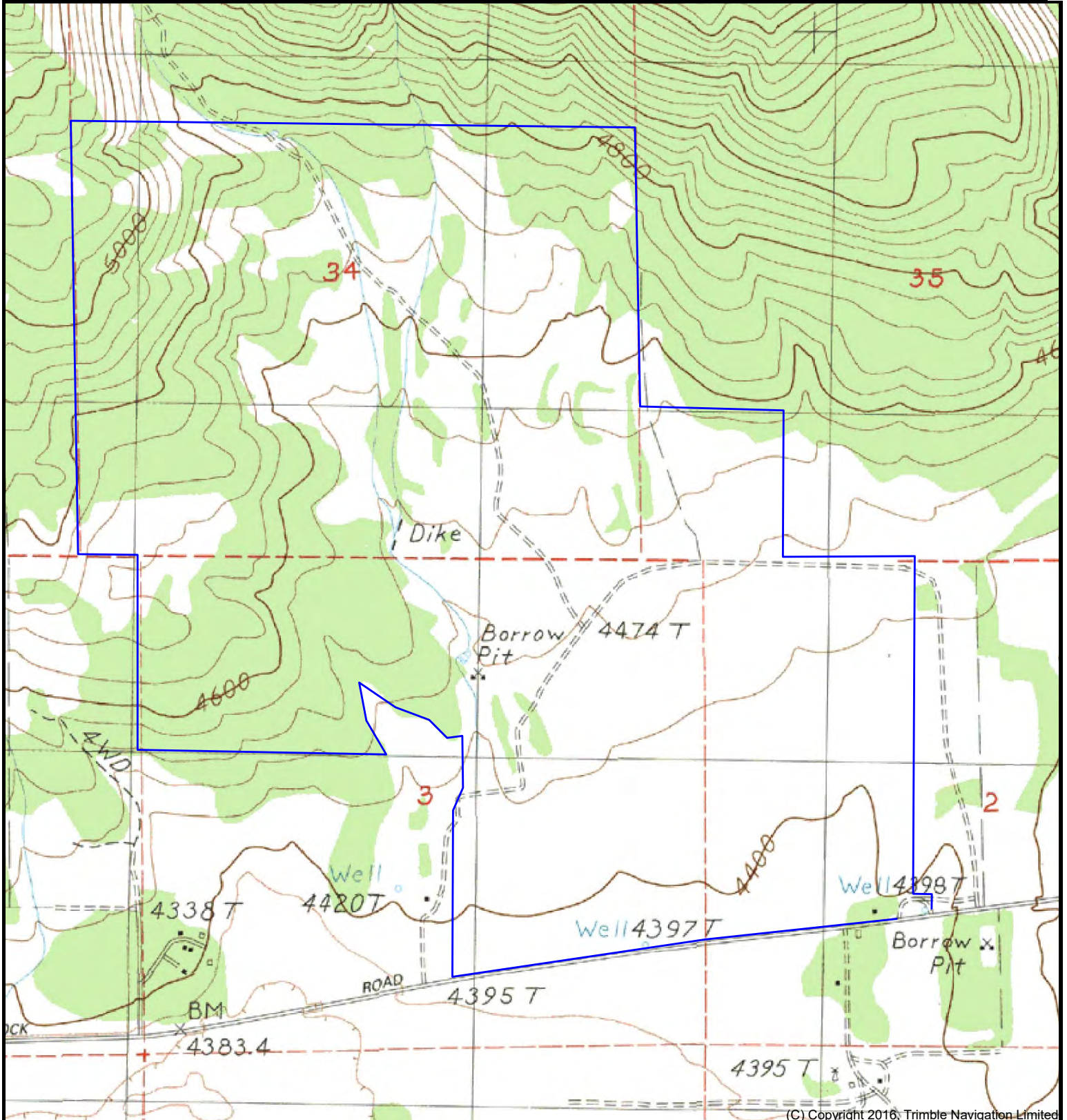
(C) Copyright 2017, Mapbox

DISCLAIMER: The information contained herein is as obtained by this broker from sellers, owners, or other sources. This information is considered reliable, neither this broker nor owners make any guarantee, warranty or representation as to correctness of any data or descriptions and the accuracy of such statements. The correctness and / or accuracy of any and all statements should be determined through independent investigation made by the prospective purchaser. Any offer for sale is subject to prior sale, errors and omissions, change of price, terms or other conditions or withdrawal from sale in whole or in part, by seller without notice and at the sole discretion of seller. Readers are urged to form their own independent conclusions and evaluations in consultation with legal counsel, accountants, and/or investment advisors concerning and all material contained herein.



# Red Rock Road Ranch Siskiyou County, CA approx. 925 acres+-

Bill Wright  
Shasta Land Services, Inc..  
530-941-8100  
billwright@ranch-lands.com  
www.ranch-lands.com



(C) Copyright 2016, Trimble Navigation Limited

DISCLAIMER: The information contained herein is as obtained by this broker from sellers, owners, or other sources. This information is considered reliable, neither this broker nor owners make any guarantee, warranty or representation as to correctness of any data or descriptions and the accuracy of such statements. The correctness and / or accuracy of any and all statements should be determined through independent investigation made by the prospective purchaser. Any offer for sale is subject to prior sale, errors and omissions, change of price, terms or other conditions or withdrawal from sale in whole or in part, by seller without notice and at the sole discretion of seller. Readers are urged to form their own independent conclusions and evaluations in consultation with legal counsel, accountants, and/or investment advisors concerning and all material contained herein.







**Organic Alfalfa hay just thru it's 2nd year - Mt. Shasta in the background**





Earlier ranch photos -newly planted firleds, grazing cattle in the fall

